The background is a dark, textured surface that looks like a brick wall. The bricks are reddish-brown and arranged in a traditional pattern, with grey mortar visible between them. The overall lighting is dim, giving it a moody, atmospheric feel.

**OBLIVIOUS:** *unmindful; unconscious; unaware*









THRACE

The Seven Churches  
of Revelation

ASIA

GALATIA

AEGEAN  
SEA

Pergamum

Thyatira

Sardis

Philadelphia

Laodicea

Smyrna

Ephesus

Athens

PATMOS

RHODES

MEDITERRANEAN SEA

BibleStudy.org

# Laodicea...

- 1) Wealthy centre of commerce and trade.



# Laodicea...

- 1) Wealthy centre of commerce and trade.
- 2) Producers of black wool.



# Laodicea...

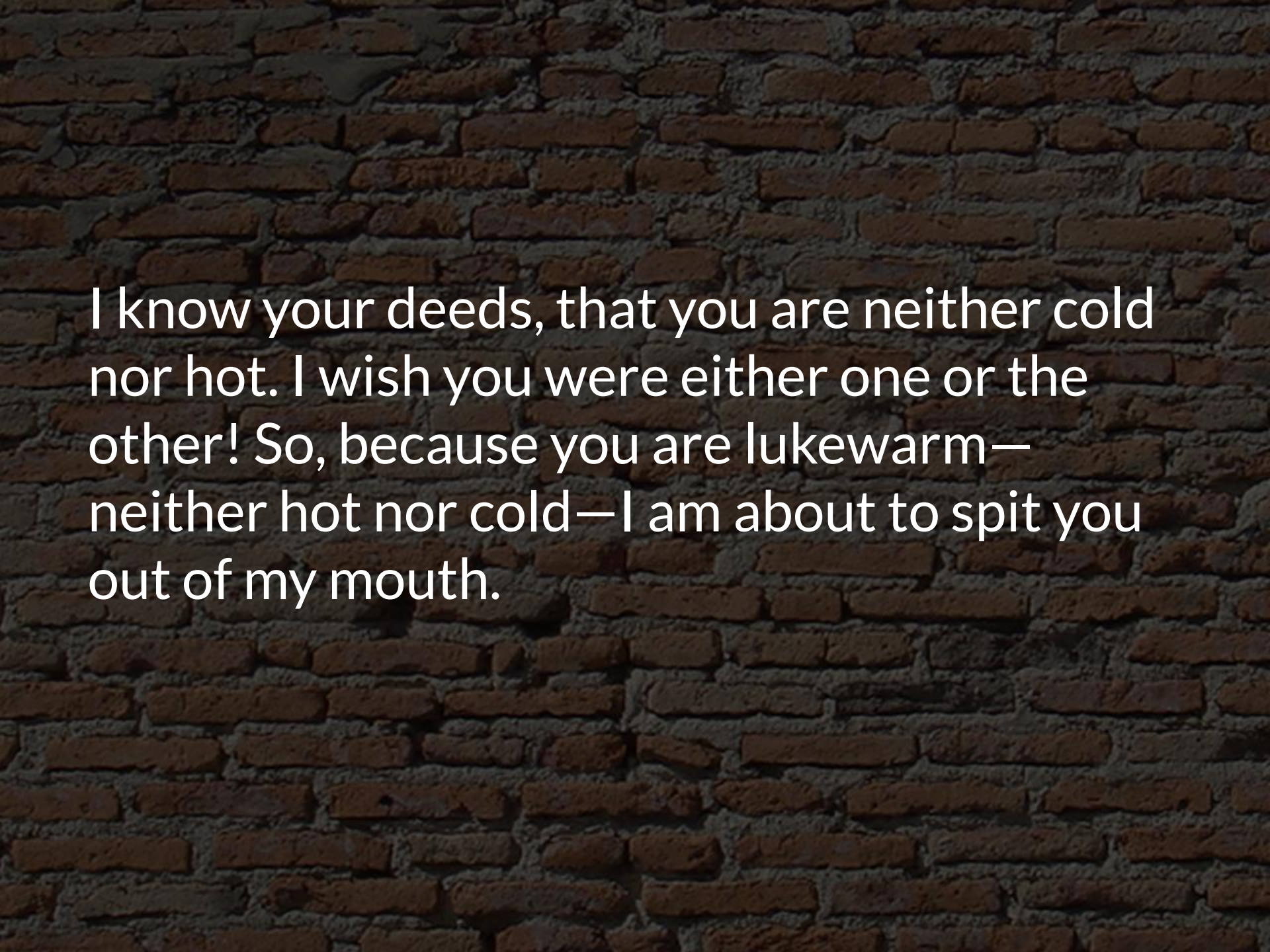
- 1) Wealthy centre of commerce and trade.
- 2) Producers of black wool.
- 3) Good medical care.



# Laodicea...

- 1) Wealthy centre of commerce and trade.
- 2) Producers of black wool.
- 3) Good medical care.
- 4) Less-than-satisfactory water supply.



The background is a dark, textured surface that looks like a brick wall. The bricks are reddish-brown and arranged in a traditional pattern, with grey mortar visible between them. The overall lighting is dim, giving it a somber and ancient appearance.

I know your deeds, that you are neither cold nor hot. I wish you were either one or the other! So, because you are lukewarm—neither hot nor cold—I am about to spit you out of my mouth.

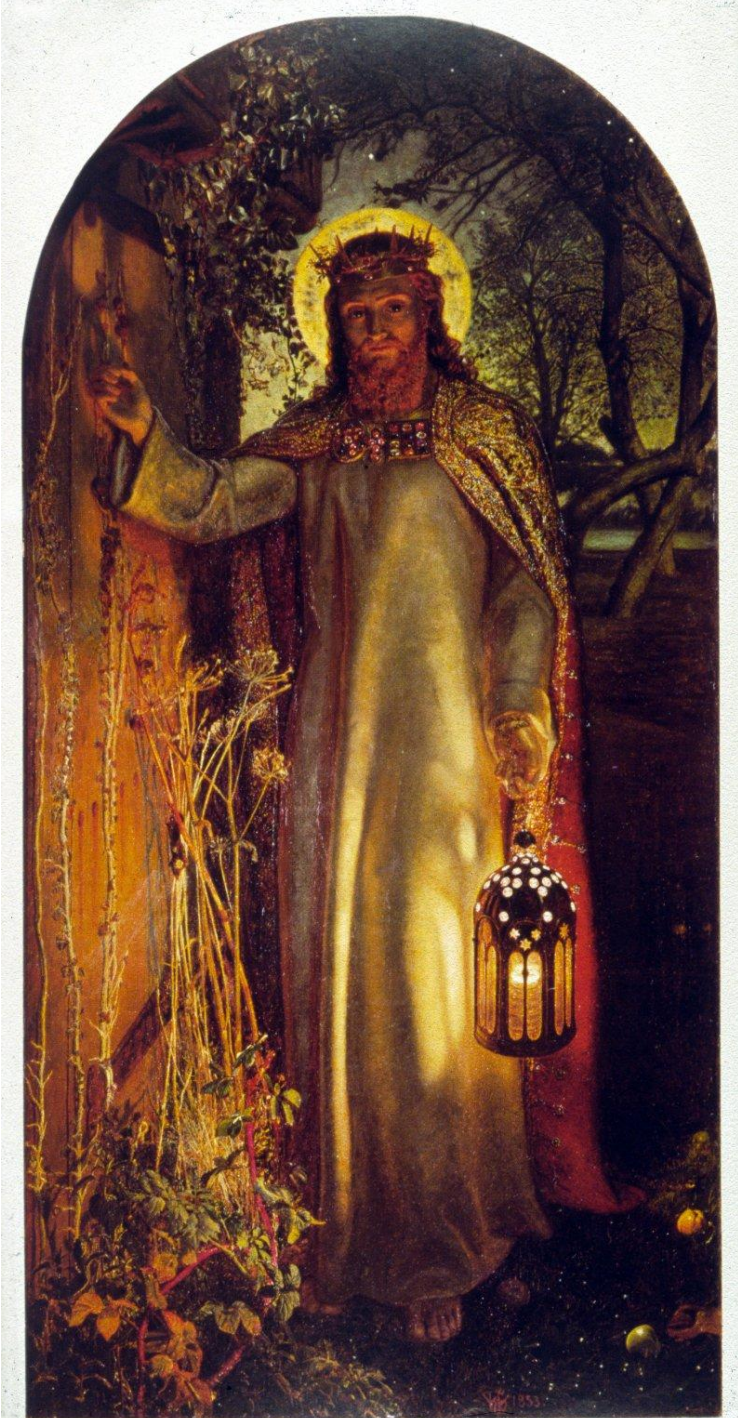


You say, 'I am rich; I have acquired wealth and do not need a thing.' But you do not realize that you are wretched, pitiful, poor, blind and naked. I counsel you to buy from me gold refined in the fire, so you can become rich; and white clothes to wear, so you can cover your shameful nakedness; and salve to put on your eyes, so you can see.











The background is a dark, textured image of a brick wall. The bricks are reddish-brown and arranged in a traditional running bond pattern. The mortar is a lighter, greyish-tan color. The overall lighting is dim, giving the wall a somber and aged appearance.

How does it go with your soul?



The background of the image is a dark, textured surface that resembles a brick wall. The bricks are arranged in a traditional pattern, with visible mortar lines. The overall color is a deep, dark brown or black, with some lighter, greyish-brown tones highlighting the texture of the bricks and mortar.

**“The longer the pipeline, the more tepid its water.”**



**“The longer the pipeline, the more tepid its water.”**

**“When our souls are close to the Source of our spiritual lives, our faith will be exciting and empowered. As we move away from him, the pipeline of tradition and routine saps our spiritual energy and converts commitment into boredom”**

*James Denison*



# Good News!

1) Jesus has what you are looking for.



# Good News!

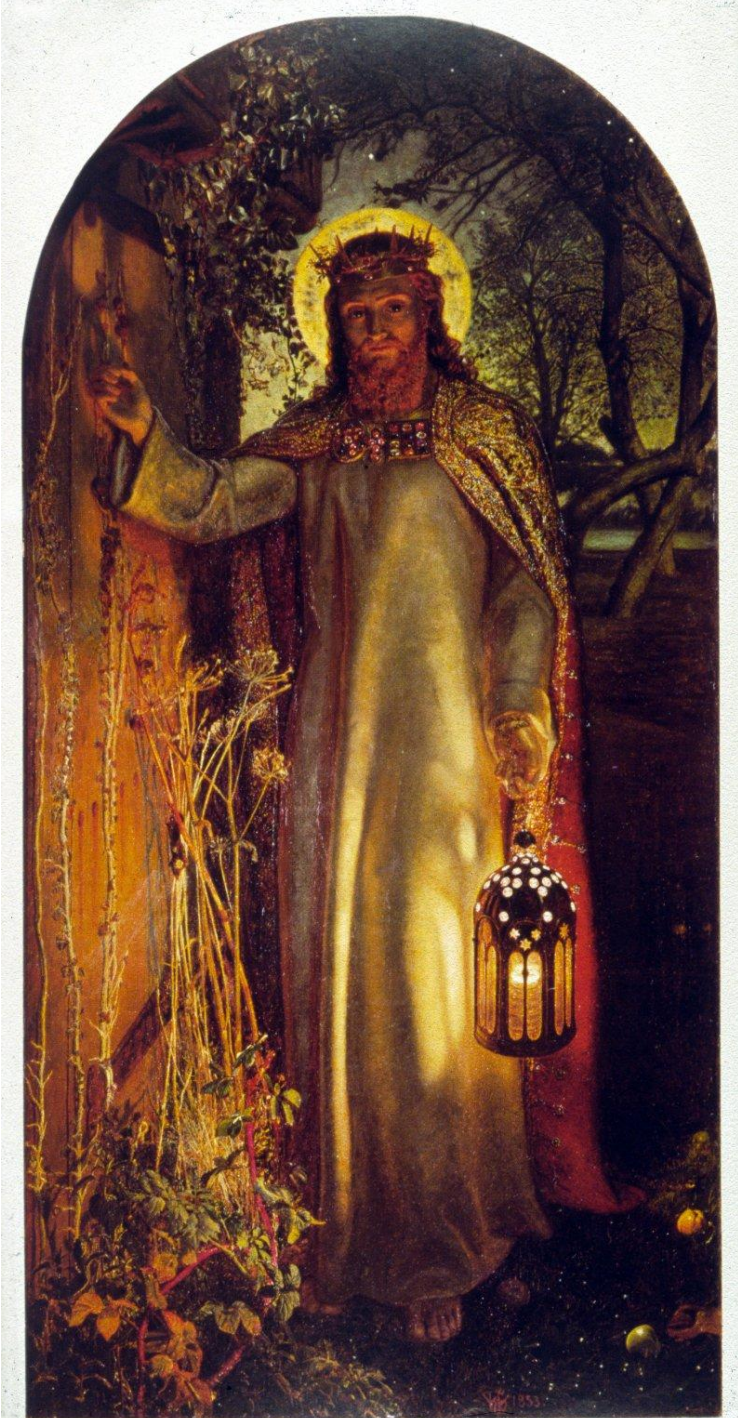
- 1) Jesus has what you are looking for.
- 2) He loves you.



# Good News!

- 1) Jesus has what you are looking for.
- 2) He loves you.
- 3) You control the handle.

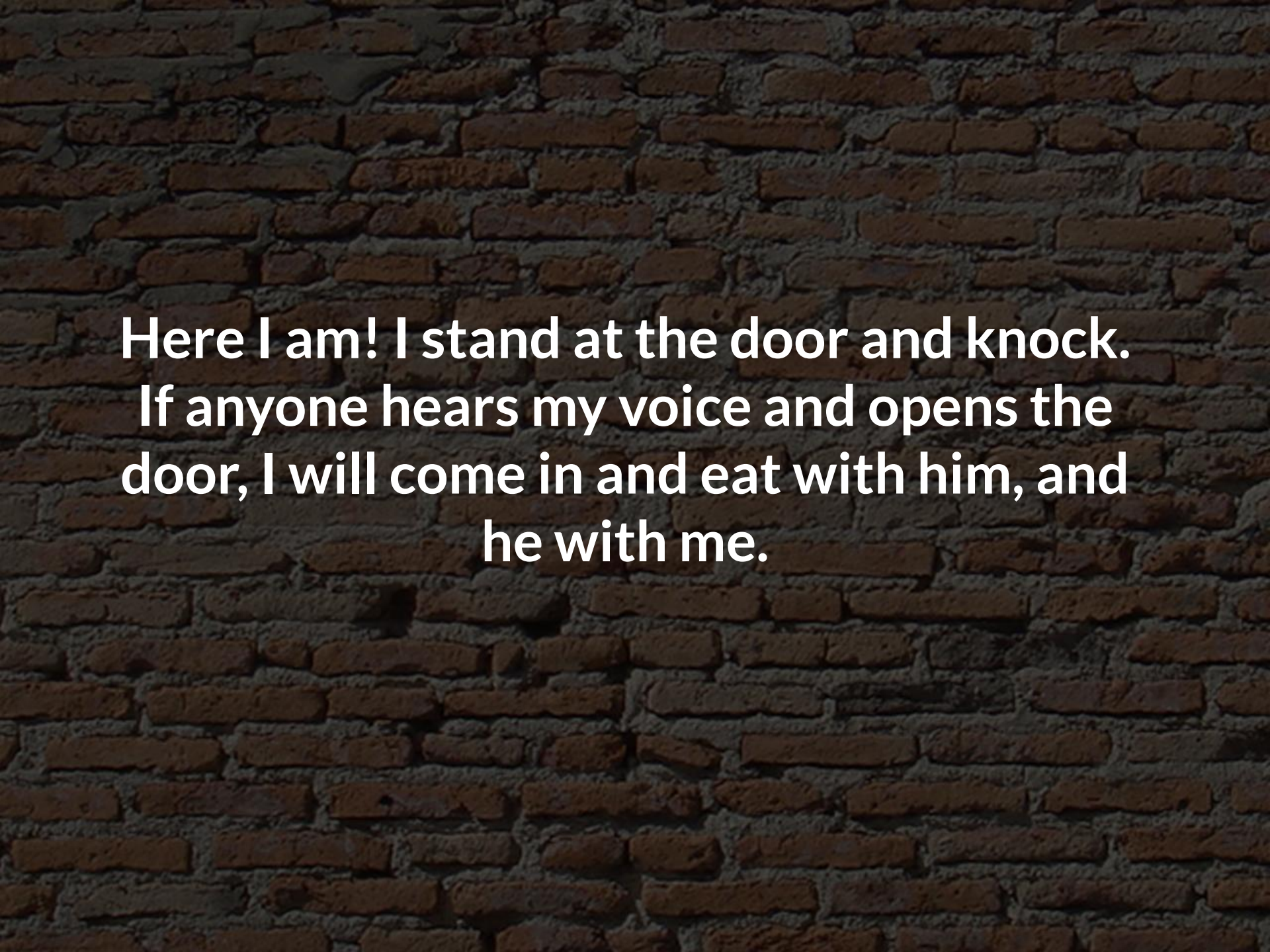












Here I am! I stand at the door and knock.  
If anyone hears my voice and opens the  
door, I will come in and eat with him, and  
he with me.